

**Horizontal Engine**  
**208CC ENGINE SERVICE DRAWING 100510, 100511 REV.A**  
**DC15-0018**

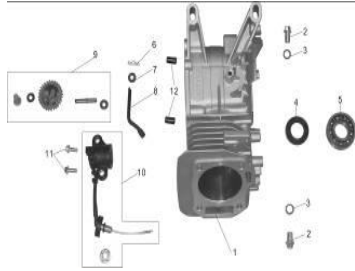
NO.	PARTS CODE	PARTS DESCRIPTION	FNA PART NUMBER	REMARKS
1	2.60.01.000200	GASKET, CRANK CASE COVER	7108242	
2	2.60.05.000200	GASKET,AIR CLEANER	7108243	
3	2.60.08.006400	HEAD GASKET	7108244	
4	2.60.09.000900	GASKET, HEAD COVER	7108245	
5	2.60.04.000200	GASKET, CARBURETOR	7108246	
6	2.60.02.000200	GASKET,AIR INTAKE	7108247	
7	2.51.17.000100	OIL SEAL 25*41.25*6	7108248	
8	2.51.06.000500	OIL DIPSTICK	7108249	
9	2.53.06.000300	PLUG SPARK / F7TC	7108250	
10	2.51.11.004100	RING SET	7108251	
11	2.60.03.000200	GASKET ,EXHAUST OPENING	7108252	
12	2.53.05.000200	SWITCH ASSY ENGINE STOP (OIL ALERT)	7108253	
13	2.63.01.00023	FLAT KEY	7108254	
14	2.52.01.012901	RECOIL STARTER	7108255	
15	2.55.01.024300	CARBURETOR	7108256	
16	2.55.02.000100	INSULATOR CARBURETOR	7108260	
17	2.53.02.000100	COIL ASSY IGNITION	7108261	
18	2.50.11.011600	AIR FILTER ASSY	7108262	
19	2.50.11.000504	COVER, AIR FILTER	7108258	
20	2.50.11.000502	ELEMENT, AIR FILTER	7108257	
21	2.50.12.025800	MUFFLER	7108263	
22	2.63.01.01705	ELASTIC RING / GB93-φ8	7108264	
23	2.63.01.00287	NUT / GB6170-M8	7108265	
24	2.55.05.089901	FUEL TANK COMP	7108266	
25	2.55.05.089902	FUEL TANK CAP	7108267	
26	2.55.05.005205	FUEL FILTER	7108268	
27	2.55.05.005206	JOINT FUEL TANK	7108269	
28	2.51.04.000700	ALERT, UNIT OIL	7108270	
29	2.51.04.000100	OIL LEVEL SWITCH	7108271	

**GASOLINE ENGINE SPARE PARTS LIST**

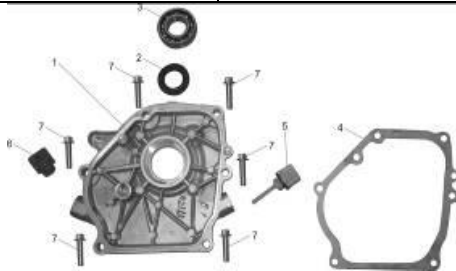


Series No.	Part Code	FNA PART NUMBER	DESCRIPTION	Unit	Quantity for One Unit					
1	2.63.01.00406		DOWEL PIN/10*16	PCS	2					
2	2.60.08.006400	7108244	HEAD GASKET	PCS	1					
3	2.63.01.00898		BOLT / GB5789-M8*55	PCS	4					
4	2.63.01.01053		BOLT STUD EX / M8*34	PCS	2					
5	2.60.03.000200	7108252	GASKET ,EXHAUST OPENING	PCS	1					
6	2.60.09.000900	7108245	GASKET, HEAD COVER	PCS	1					
7	2.63.01.00180		BOLT / GB5787-M6*14	PCS	4					
8	2.53.06.000300	7108250	PLUG SPARK / F7TC	PCS	1					

9	2.63.01.00052		BOLT STUD / M6*113	PCS	2					
10	2.50.01.007000		COVER,CYLINDER HEAD	PCS	1					
11	2.50.02.004900		CYINDER HEAD	PCS	1					



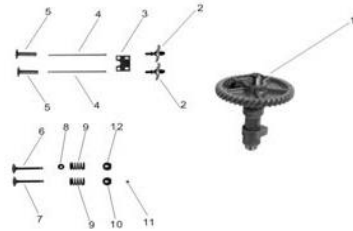
Series No.	Part Code	FNA PART NUMBER	DESCRIPTION	Unit	Quantity for One Unit					
1	2.51.01.014400		CRANKCASE WITH HOLE	PCS	1					
2	2.63.01.01754		BOLT / GB5787-M10*15*1.25	PCS	2					
3	2.63.01.00497		PARONITE GASKET φ10×φ15×1.2	PCS	2					
4	2.51.17.000100		OIL SEAL 25*41.25*6	PCS	1					
5	2.63.02.006000		BEARING / GB276-6205	PCS	1					
6	2.63.01.00387		LOCK PIN/1*5.7	PCS	1					
7	2.63.01.00370		IRON WASHER /GB97-6*15*0.5	PCS	1					
8	2.51.03.000100		SHAFT GOVERNOR ARM	PCS	1					
9	2.51.02.000100		GOVERNOR GEAR	SET	1					
10	2.51.04.000100	7108271	OIL LEVEL SWITCH	PCS	1					
11	2.63.01.00191		BOLT / GB5787-M6*16	PCS	2					
12	2.63.01.00404		DOWEL PIN / 8*14	PCS	2					



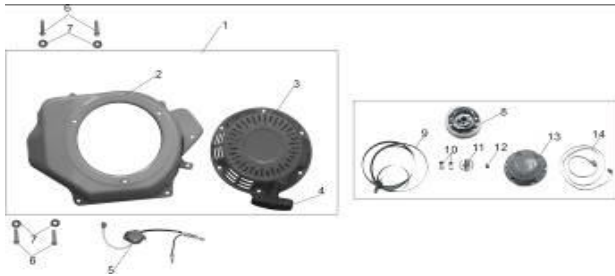
Series No.	Part Code	FNA PART NUMBER	DESCRIPTION	Unit	Quantity for One Unit					
1	2.51.05.001300		CRANKCASE COVER	PCS	1					
2	2.51.17.000100	7108248	OIL SEAL 25*41.25*6	PCS	1					
3	2.63.02.006000		BEARING / GB276-6205	PCS	1					
4	2.60.01.000200	7108242	GASKET, CRANK CASE	PCS	1					
5	2.51.06.000500	7108249	OIL DIPSTICK	PCS	1					
6	2.51.07.000200		OIL FILLER PLUG	PCS	1					
7	2.63.01.02743		BOLT//GB5787-M8*32	PCS	6					



Series No.	Part Code	FNA PART NUMBER	DESCRIPTION	Unit	Quantity for One Unit					
1	2.51.15.045200		CRANKSHAFT COMP	PCS	1					
2	2.51.11.004100	7108251	RING SET	SET	1					
3	2.51.08.004600		PISTON	PCS	1					
4	2.51.10.000100		CLIP PISTON PIN	PCS	2					
5	2.51.09.000100		PIN PISTON	PCS	1					
6	2.51.12.004900		ROD ASSY CONNECTING	PCS	1					



Series No.	Part Code	FNA PART NUMBER	DESCRIPTION	Unit	Quantity for One Unit					
1	2.51.15.000300		CAMSHAFT	PCS	1					
2	2.50.05.000100		ARM VALVE ROCKER ASSEMBLY	SET	2					
3	2.50.06.000100		SR168F/P	PCS	1					
4	2.50.07.000100		ROD PUSH	PCS	2					
5	2.50.08.000200		LIFTER VALVE	PCS	2					
6	2.50.03.000100		VALVE IN	PCS	1					
7	2.50.04.000100		VALVE EX	PCS	1					
8	2.50.10.000100		SR168F/P	PCS	1					
9	2.50.09.000100		SPRING, VALVE	PCS	2					
10	2.50.09.000300		RETAINER, EX.VALVE SPRING	PCS	1					
11	2.50.09.001300		ROTATOR VALVE	PCS	1					
12	2.50.09.000200		RETAINER, IN.VALVE SPRING	PCS	1					

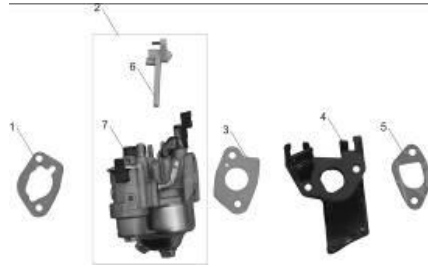


Series No.	Part Code	FNA PART NUMBER	DESCRIPTION	Unit	Quantity for One Unit					
1	2.52.01.118300		RECOIL STARTER COMP	PCS	1					
2	/		COVER COMP FAN	PCS	1					
3	/		STARTER	PCS	1					
4	/		KNOB	PCS	1					
5	2.53.05.000200	7108253	SWITCH ASSY ENGINE STOP (OIL ALERT)	PCS	1					
6	2.63.01.01756		BOLT / GE5787-M6*12	PCS	1					
7	/			PCS	4					
8	/		REEL RECOIL STARTER	PCS	1					
9	/		SPRING RECOIL SATRTER	PCS	1					
10	/		RATCHET STARTER	PCS	1					
11	/		GUIDE RATCHET	PCS	1					

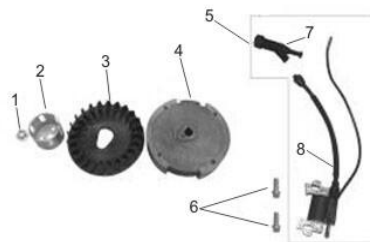
12	/		SCREW SETTING	PCS	1					
13	/		COVER STARTER	PCS	1					
14	2.52.01.006101		ROPE	PCS	1					



Series No.	Part Code	FNA PART NUMBER	DESCRIPTION	Unit	Quantity for One Unit					
1	2.52.07.000100		PLATE SIDE	PCS	1					
2	2.51.04.000700	7108270	ALART UNIT OIL	PCS	1					
3	2.63.01.01756		BOLT / GE5787-M6*12	PCS	1					
4	2.62.01.000100		WIRE CLIP	PCS	1					
5	2.52.06.001700		POD	PCS	1					
6	2.63.01.01756		BOLT / GE5787-M6*12	PCS	2					
7	2.63.01.01750		BOLT / GE5787-M6*20	PCS	1					

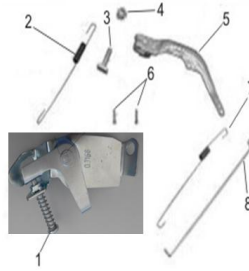


Series No.	Part Code	FNA PART NUMBER	DESCRIPTION	Unit	Quantity for One Unit					
1	2.60.05.000200	7108243	GASKET,AIR CLEANER	PCS	1					
2	2.55.01.024700		CARBURETOR	SET	1					
3	2.60.04.000200	7108246	GASKET, CARBURETOR	PCS	1					
4	2.55.02.000100	7108260	INSULATOR CARBURETOR	PCS	1					
5	2.60.02.000200	7108247	GASKET,AIR INTAKE	PCS	1					
6	/		CHOKE LEVER	PCS	1					
7	/		CARBURETOR BODY	PCS	1					

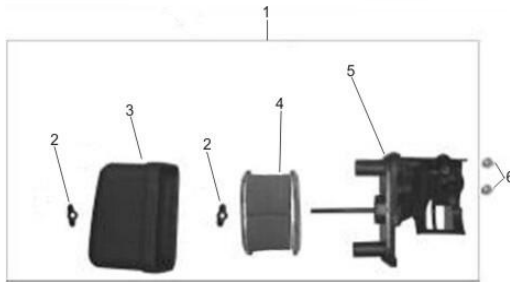


Series No.	Part Code	FNA PART NUMBER	DESCRIPTION	Unit	Quantity for One Unit					
1	2.63.01.00299		NUT / GB6177-M14	PCS	1					
2	2.52.03.003400		PULLEY STARTER	PCS	1					
3	2.52.04.002300		FAN COOLING / BLACK PP	PCS	1					

4	2.53.01.000100		FLYWHEEL COMP	PCS	1					
5	2.53.02.000100	7108261	COIL ASSY IGNITION	SET	1					
6	2.63.01.00914		BOLT / GB5787-M6*25	PCS	2					
7	2.53.02.000202		CAP ASSY NOISE SUPPRESS	PCS	1					
8	/		COIL IGNITION	PCS	1					



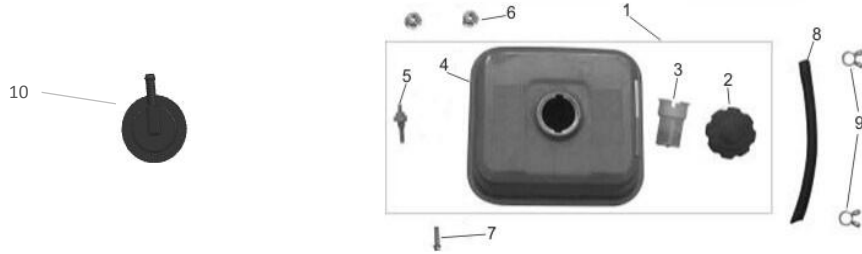
Series No.	Part Code	FNA PART NUMBER	DESCRIPTION	Unit	Quantity for One Unit					
1	2.54.01.011300		CONTROL ASSY (for high pressure washer)	PCS	1					
2	2.54.02.003400		SPRING GOVERNOR	PCS	1					
3	2.63.01.00124		NUT FLANGE M6*21	PCS	1					
4	2.63.01.00291		NUT / GB6177-M6	PCS	1					
5	2.54.04.002000		ARM GOVERNOR	PCS	1					
6	2.63.01.01756		BOLT / GB5787-M6*12	PCS	2					
7	2.54.02.000200		SPRING THROTTLE RETURN	PCS	1					
8	2.54.03.002400		ROD GOVERNOR	PCS	1					



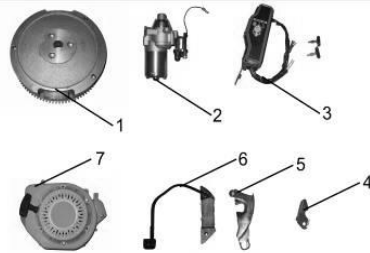
Series No.	Part Code	FNA PART NUMBER	DESCRIPTION	Unit	Quantity for One Unit					
1	2.50.11.011600	7108262	SEMI DRY FILTER ASSY	SET	1					
2	/		BUTTERFLY NUT	PCS	2					
3	2.50.11.000504	7108258	AIR FILTER COVER	PCS	1					
4	2.50.11.000502	7108257	AIR FILTER ELEMENT	PCS	1					
5	/		STEADIER	PCS	1					
6	2.63.01.00291		NUT / GB6177-M6	PCS	2					



Series No.	Part Code	FNA PART NUMBER	DESCRIPTION	Unit	Quantity for One Unit					
1	2.50.12.025800	7108263	MUFFLER	PCS	1					
2	2.63.01.01705	7108264	ELASTIC RING / GB93-φ8	PCS	2					
3	2.63.01.00287	7108265	NUT / GB6170-M8	PCS	2					



Series No.	Part Code	FNA PART NUMBER	DESCRIPTION	Unit	Quantity for One Unit					
1	2.55.05.089901	7108266	FUEL TANK COMP	SET	1					
2	2.55.05.089902	7108267	FUEL TANK CAP	PCS	1					
3	2.55.05.005205	7108268	FUEL FILTER	PCS	1					
4	/		TANK	PCS	1					
5	2.55.05.005206	7108269	JOINT FUEL TANK	PCS	1					
6	2.63.01.00291		NUT / GB6177-M6	PCS	2					
7	2.63.01.00193		BOLT / GB5787-M6*28	PCS	1					
8	2.55.06.007000		TUBE 4.5*8*145	PCS	1					
9	2.55.07.003200		CLIP TUBE	PCS	2					
10	2.55.04.001500		ROLL OVER VALVE	PCS	1					



Series No.	Part Code	FNA PART NUMBER	DESCRIPTION	Unit	Quantity for One Unit					
1	2.53.01.000900		FLYWHEEL COMP (ELECTRIC START)	PCS	1					
2	2.52.02.000100		STARTER MOTOR	PCS	1					
3	/		ELECTRIC START SWITCH WITH KEY	PCS	1					
4	2.53.07.000800		LOCK BLOCK OF WIRE	PCS	1					
5	2.52.07.003300		PLATE SIDE (ELECTRIC START)	PCS	1					
6	2.53.03.000100		CHARGE COIL ASSY (ELECTRIC START)	PCS	1					
7	2.52.01.118300		STARTER COMP (ELECTRIC START)	PCS	1					